

## Advanced System Repair Pro



### Driver Detection and Update

#### Overview

Adobe Flash Player, originally developed by Macromedia, has long been a staple of Windows-based machines. While technology has gradually been moving away from Flash-based applications, it is still widely distributed and installed throughout the world.

As such, whenever a fault occurs within Flash Player it can lead to content not loading correctly, a host of error messages, and sometimes other secondary effects. When this occurs, it is in the best interest of the user to remedy the problem as soon as possible; if not for machine stability then to prevent any possible exploitation.

#### Testing

Platforms	
 <b>Windows 10</b> Intel i7 16GB Memory 1TB Storage	 <b>Windows 8</b> Intel i5 12GB Memory 1TB Storage

Advanced System Repair Pro is able to identify specific faults within Flash Player as part of its suite of anti-corruption and performance-enhancement tools. To verify this ability, Checkmark Certified introduced a variety of faults within Flash Player and recorded where ASR was able to detect and remediate these faults.

Testing included the deletion of core files, modification of Flash executable files, and corruption of Flash-specific registry entries. After each modification, ASR was instructed to scan the system and report on detected faults.

#### Test Outcome

Advanced System Repair Pro was able to demonstrably return Flash Player to a working/functional state after each modification.

<i>Driver Type</i>	<i>Detected</i>		<i>Updated</i>	
	<i>Win10</i>	<i>Win8</i>	<i>Win10</i>	<i>Win8</i>
<i>Display Adaptor</i>	✓	✓	✓	✓
<i>Network Adaptor</i>	✓	✓	✓	✓
<i>Soundcard</i>	✓	✓	✓	✓
<i>Ethernet NIC</i>	✓	✓	✓	✓
<i>Wireless NIC</i>	✓	✓	✓	✓
<i>SATA Device</i>	✓	✓	✓	✓

## Advanced System Repair Pro – Product Overview

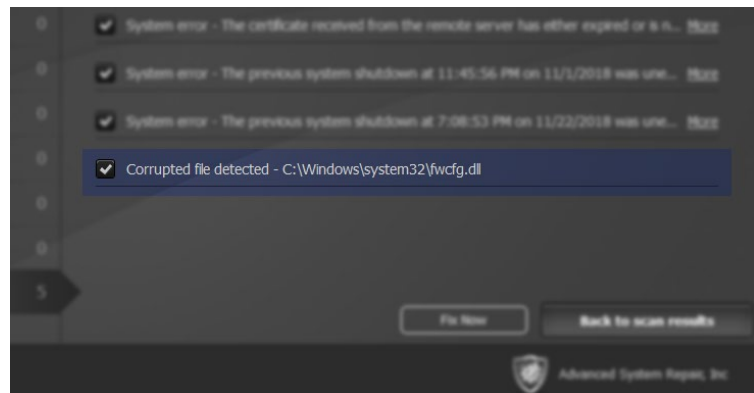
While some system clean-up utilities may focus on a given area, such as driver updates, system registry, or disk fragmentation, ASR provides a complete system repair capability; including a malware detection and removal engine that has, separately to this test, been awarded Checkmark Certification in its own right.



Running of the scan is comparatively fast, especially considering the breadth of areas covered, and results are displayed to the user in a clear and concise manner.

The UI is well designed and permits a good degree of user control and configuration, without becoming a maze of individual option screens and settings.

Aside from making noticeable improvements to the system responsiveness and general performance, ASR also introduced a minimal resource footprint of its own. In contrast to products that clean systems while proving a drain on performance themselves.



## Summary

ASR is a complete solution that protects the end user while improving system stability and performance.

## Disclaimer

Checkmark Certified is dedicated to ensuring the highest standard of security product testing in the industry, it is never possible within the scope of any given test to completely and exhaustively validate every variation of the security capabilities and/or functionality of any particular product tested and/or guarantee that any particular product tested is fit for any given purpose. Therefore, the test results published within any given report should not be taken and accepted in isolation.

Potential customers interested in deploying any particular product tested by Checkmark Certified should seek further confirmation that the said product will meet their individual requirements, technical infrastructure and specific security considerations. All test results represent a snapshot of security capability at one point in time and are not a guarantee of future product effectiveness and security capability.

Checkmark Certified provide test results for any particular product tested, most relevant at the time of testing and within the specified scope of testing and relative to the specific test hardware, software, equipment, infrastructure, configurations and tools used during the specific test process.